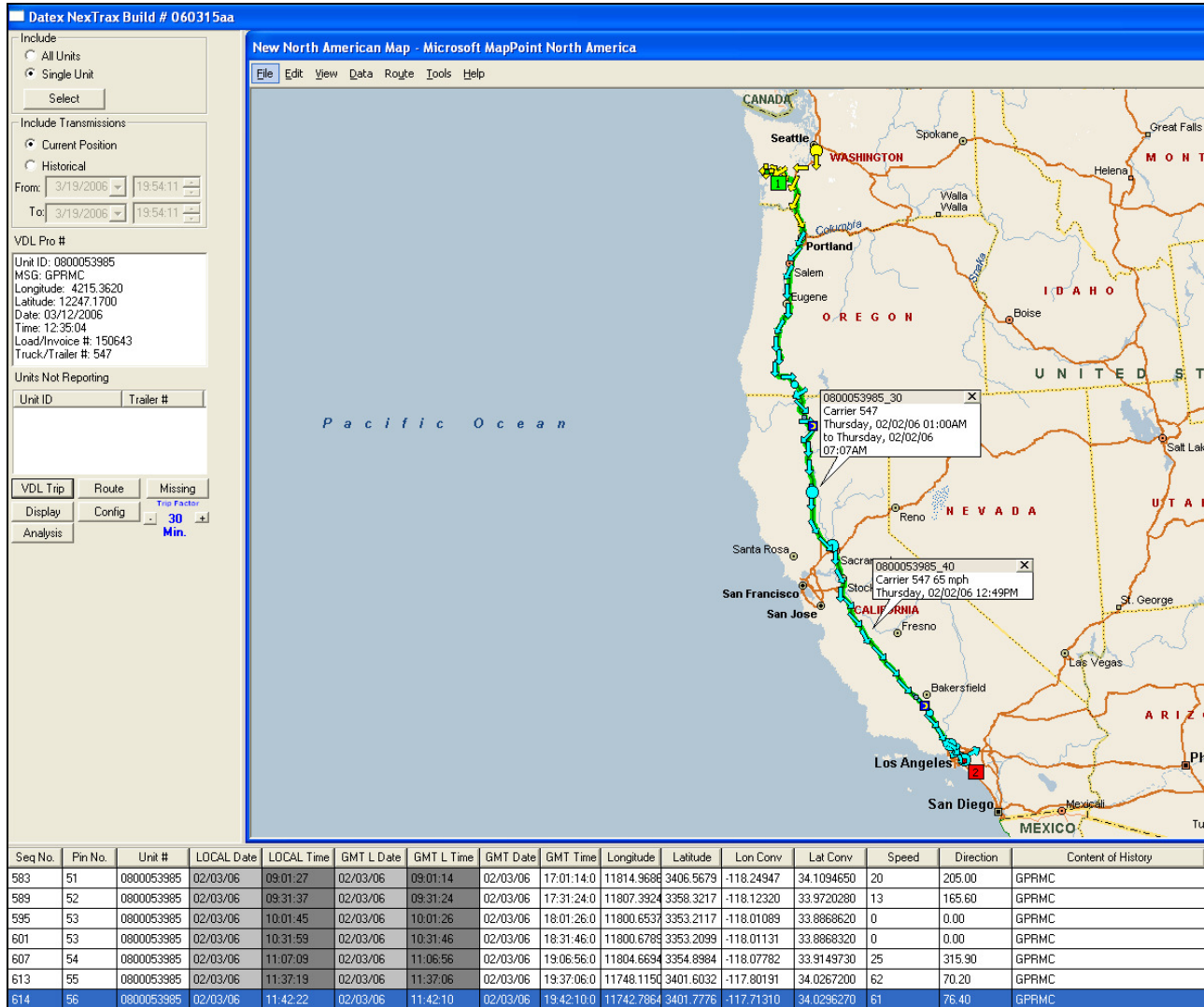


## GPS Tracking/ Automatic Vehicle Location



### A real tracking solution.

Tracking equipment via cell phones is not a realistic solution for tracking drivers or equipment. Phones can be disconnected, run out of power and have limited cellular range.

We use hardened GPS modems that can be mounted covertly in the cab, trailer or engine compartment. The modems have roughly six (6) times the transmission power of hand held phones.

### For Less!

Data transmission is via NextTel's IDEN network and the Internet, shattering old 2 way satellite based pricing models. Get position updates every 5 minutes for \$10 per month per truck! Let us show you how to track your fleet reliably and effectively for a breakthrough low price!